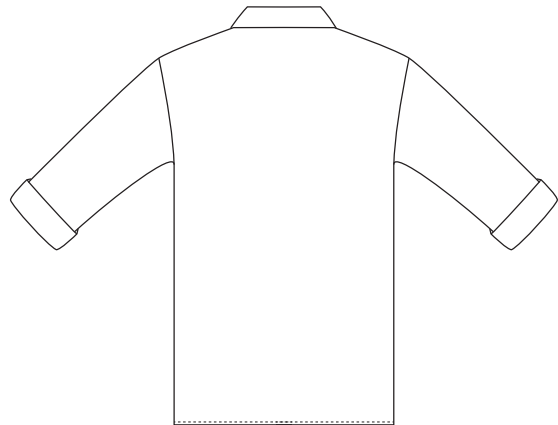


I AM LUCIENNE

SEWING PATTERN / PATRON DE COUTURE



36/46

SIMPLE / SIMPLE

I AM

FABRICS

RECOMMENDED FABRICS:

Batiste, poplin, thin denim, viscose, double gauze

FABRIC REQUIREMENTS:

Shirt: 2 1/4 yards by 55" wide

Tunic: 2 13/16" by 55" wide

Dress: 3 5/16" by 55" wide

SUPPLIES

Fabric

Buttons of 1/2" to 5/8" diameter:

Shirt: 7 buttons

Tunic: 10 buttons

Dress: 12 buttons

MEASUREMENT CHART

SIZES (inches)	36	38	40	42	44	46
BUST	32 1/4	33 3/8	35 1/2	37	38 1/2	40 1/8
WAIST	24 1/2	26	27 1/2	29 1/2	30 3/4	32 1/4
HIP	34 3/4	36 1/4	37 3/4	39 3/4	40 3/4	42 1/2

IAMPATTERNS.FR

PREPARATION

1 Wash and iron your fabric before cutting it. This is to avoid shrinking or dyeing surprises.

2 Choose your size according to the measurement chart. Choose the size corresponding to the highest width. For example: If your waist and hip measurements are a size 38, and your bust a size 40, then choose the size 40. If your measurements fall between two sizes, choose the biggest size. For the metric system measurement chart, refer to the French instructions.

3 For your convenience, the seam allowances are included in the pattern. It's more precise, and saves you precious time. Trace and cut the pattern following the lines which correspond to your size.

4 Pin the pattern to the fabric as shown on the layout plan. Cut precisely following the edge of the pattern. Remember to clip the fabric to create the notches. Unless notified, all notches will be cut 3/16", which corresponds to half the seam allowance value.

Legend:



ADVICE

When sewing, reinforce each seam with a back stitch at the beginning and at the end.

For best result, after each seam, cut the thread really close and iron the seam. Ironing all seams is the best advice we can give you to ensure a neater finish.

Find step by step visual instructions for most of our patterns on our journal at iampatterns.fr

FOLLOW US

Follow us on social media and once your garment is finished take a picture and share it with:

@iam_patterns
#iampatterns
#IAMLUCIENNE

Ready for your next project? Get inspired and discover all our patterns at iampatterns.fr

We wish you great sewing times.
Best from all of us,
The I AM team.

IAM iampatterns.fr
facebook.com/iampatterns
instagram.com/iam_patterns
pinterest.com/iam_patterns

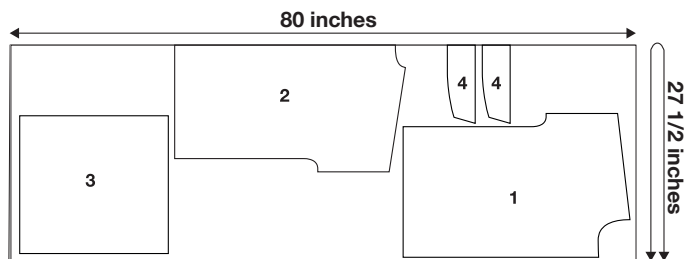
1 Cutting the fabric

If you are planning on sewing the longer versions, lengthen the bottom of the back bodice and front bodice pieces by:

- 10" for the tunic version
- 18" for the dress version

Cut the fabric following the cutting layout. The cutting layout is the same for all three versions.

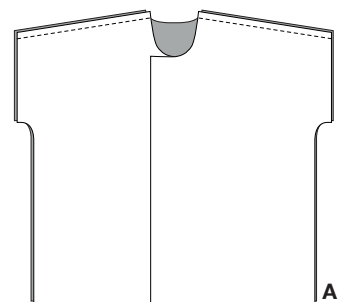
Make notches as indicated on the pattern as well as on the center backs of both the garment and the collar.



2 Sewing the sleeves

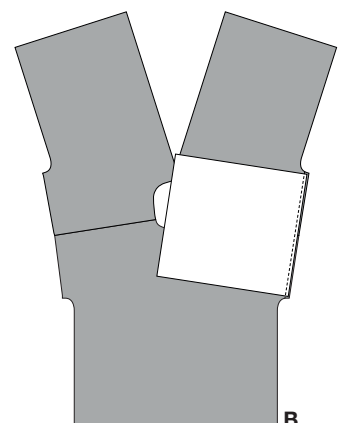
SEWING THE SHOULDERS

Place both front bodice pieces and the back bodice right sides together and align the shoulders. Pin in place and sew at 3/8" **(A)**. Overlock and iron towards the back.



SEWING THE SLEEVES

Place one sleeve on the right armhole right sides together. Pin in place and sew at 3/8" **(B)**. Overlock. Repeat the operation to sew the left sleeve.



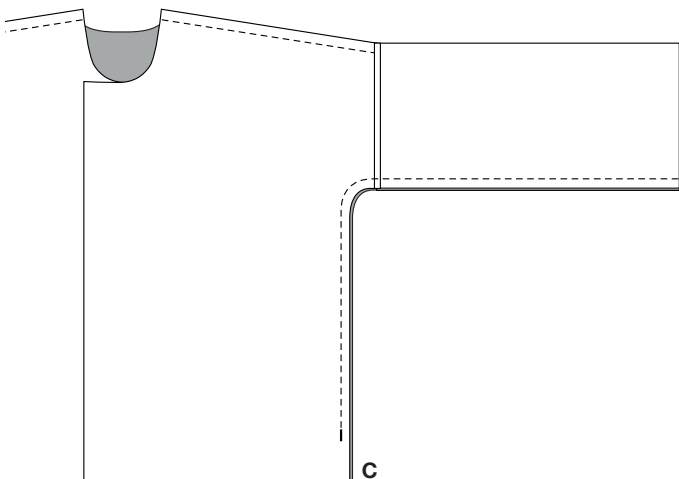
3 Sewing the sides

PREPARING THE SIDES

Overlock each side of the front and the back individually. For each, start at the bottom of the sleeve and finish at the bottom of the garment.

SEWING THE SIDES

Place the fronts and the back right sides together and align the sides. Pin in place and sew each side at $\frac{3}{8}$ " (C). For the shirt and the tunic stop 5" from the bottom and for the dress stop 13" from the bottom to create the slits.



4 Preparing the collar

FINISHING THE SLITS

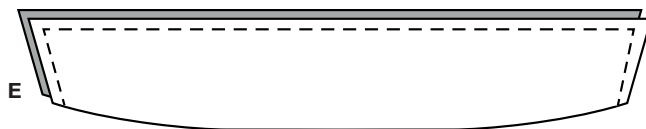
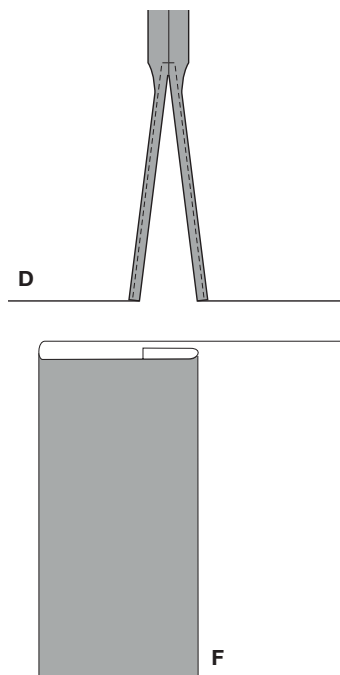
At the slits, fold and iron $\frac{3}{16}$ " and again $\frac{3}{16}$ " towards the wrong side. Pin in place. Sew from one end to the other at 2 mm as shown on the drawing (D).

PREPARING THE COLLAR

Place both collar pieces right sides together. Pin in place. Sew the extremities and along the straight line of the collar at $\frac{3}{8}$ " (E). Turn right side out and iron.

PREPARING THE BUTTON PLACKETS

Prepare the button plackets but do not sew them yet. On each center front, fold and iron $\frac{3}{8}$ " and then $1 \frac{3}{16}$ " towards the wrong side (F).

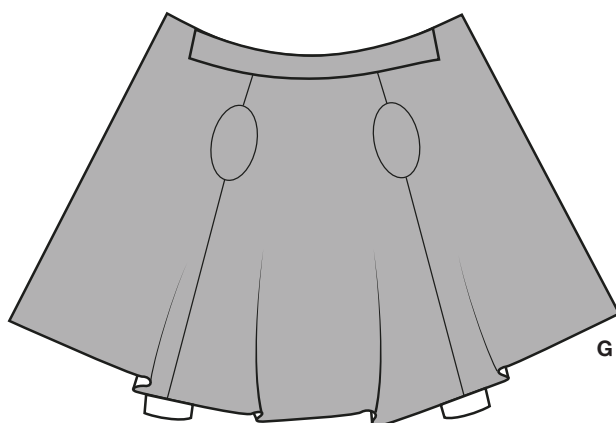
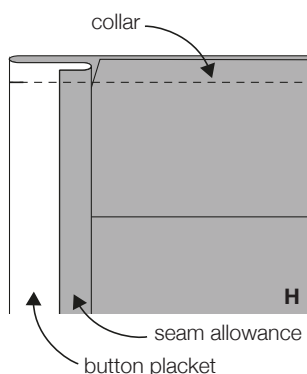


5 Sewing the collar

SEWING THE COLLAR

Place the collar on the neckline of the garment right sides together. Match the center backs together and match the notches with the shoulder seams. Pin in place (G). Fold the button placket right sides together at the neckline as shown on the drawing H. Sew at $\frac{3}{8}$ " (H) and overlock.

Tip: the experienced seamstresses might want to bias bind the seam instead of overlocking it.



6 Finishing

SEWING THE BUTTON PLACKETS

Turn the top of one button placket right side out. Pin along the pre-shaped button placket. On the wrong side, topstitch to maintain the button placket in place (I). Repeat the operations for the other button placket.

SEWING THE BUTTONS

Mark the position of the buttonholes and sew them. Sew the buttons matching the buttonholes.

SEWING THE HEMS

At the bottom of each sleeve, fold and iron $\frac{3}{8}$ " and again $\frac{3}{8}$ " towards the wrong side. Pin in place and topstitch to maintain the hems in place (J). Repeat the operations to sew the hem at the bottom of the garment.

Roll up the sleeves a few times and wear the garment.

